

# Net2Phone CVOSS Portal Screen Shots

**CVOSS Portal - Microsoft Internet Explorer**

**CVOSS**  
Powered By **net2phone**

Copyright © 2002 Net2phone, Inc. All Rights Reserved.  
**Primary Server**

Welcome, mwandzilak! - [Sign Out](#)

**Hosters**  
[DIDs](#)  
[IPs](#)  
[Spans](#)  
[Upstream Interfaces](#)  
[Nodes](#)  
[Locations](#)  
[Contacts](#)  
[Carriers](#)  
[Probes](#)  
[SNMP Hosts](#)  
[SNMP Traps](#)  
[Notifications](#)  
[Server Status](#)

**Network Management**  
[Alarms](#)  
[NOC Home](#)  
[Network Tools](#)  
[System Monitor](#)  
[Traffic Reports](#)  
[Analysis Reports](#)  
[CoreOS](#)

**Administration**  
[Users](#)  
[Roles](#)

**Operations**  
[Directory Extracts](#)  
[Invoice Processing](#)

**Help**  
[Documentation](#)  
[FAQ](#)  
[About CVOSS](#)  
[PC Client Download](#)

**Themes**

**Reports**

**Payments**  
A report of all payments. By default, this report displays only those payments made today, but you can query for other dates as well.

**Adjustments**  
A report of all adjustments. By default, this report displays only those adjustments made today, but you can query for other dates as well.

**Past Due**  
A report of subscribers with outstanding balances for more than 40, 50, 61, 68, and 90 days.

**Journal**  
A list of journal entries.

**Red Flag**  
Red Flag Report

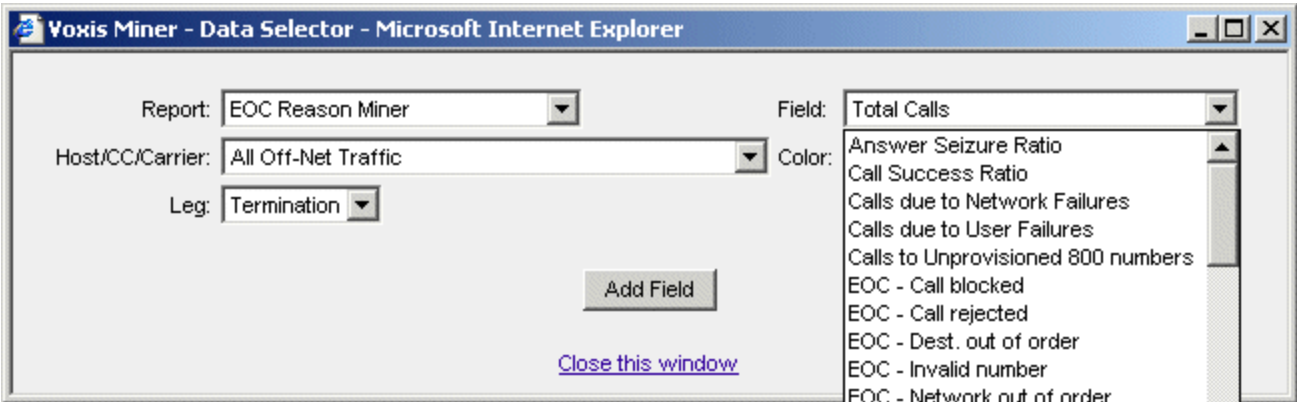
**Red Flag Summary**  
A summary view of the Red Flag Report.

**Daily Business Report**

## Complete suite of Billing Analysis Reports

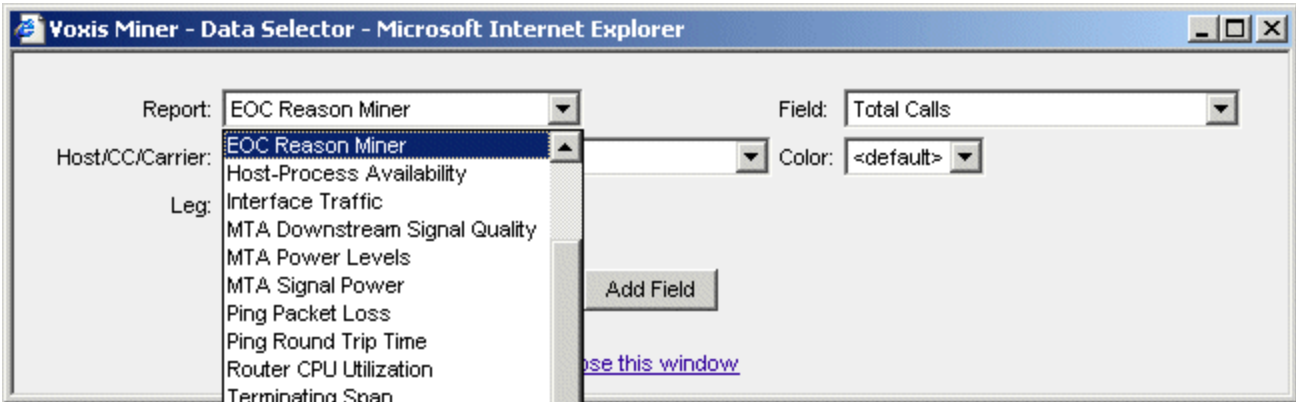
Slide 1 of 6

# Net2Phone CVOSS Portal Screen Shots



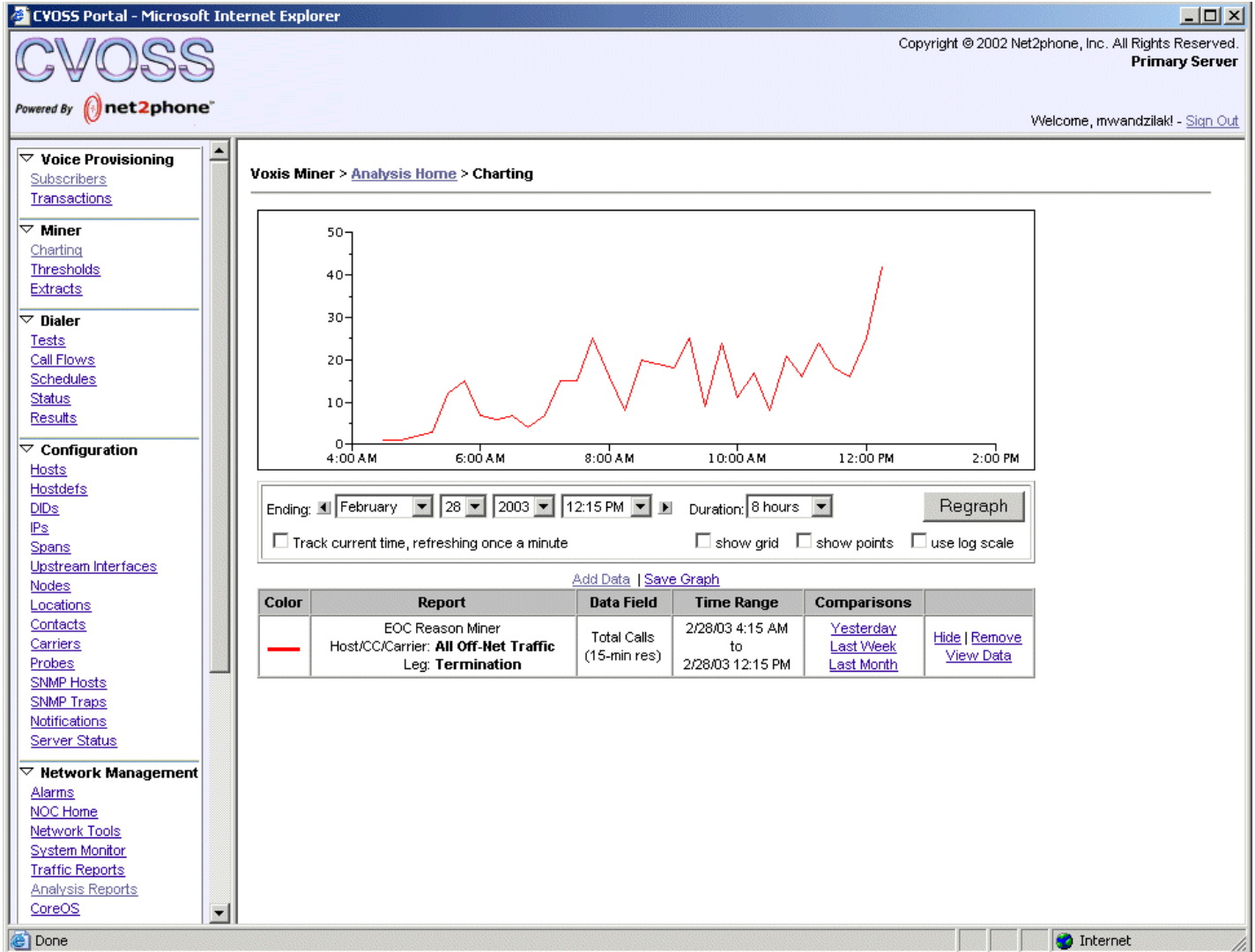
Data mining across combinations of telephony metrics

# Net2Phone CVOSS Portal Screen Shots



Data mining across combinations of telephony metrics

# Net2Phone CVOSS Portal Screen Shots



Fully configurable graphs based on real-time and historical data

Slide 4 of 6

# Net2Phone CVOSS Portal Screen Shots

The screenshot shows the CVOSS Portal interface. At the top, the browser title is "CVOSS Portal - Microsoft Internet Explorer". The page header includes the "CVOSS" logo, "Powered By net2phone", and copyright information: "Copyright © 2002 Net2phone, Inc. All Rights Reserved. Primary Server". A user greeting "Welcome, mwandzilak! - Sign Out" is visible in the top right.

The left navigation menu contains the following links:

- Hosters
- DIDs
- IPs
- Spans
- Upstream Interfaces
- Nodes
- Locations
- Contacts
- Carriers
- Probes
- SNMP Hosts
- SNMP Traps
- Notifications
- Server Status
- Network Management**
  - Alarms
  - NOC Home
  - Network Tools
  - System Monitor
  - Traffic Reports
  - Analysis Reports
  - CoreOS
- Administration**
  - Users
  - Roles
- Operations**
  - Directory Extracts
  - Invoice Processing
- Help**
  - Documentation
  - FAQ
  - About CVOSS
  - PC Client Download

The main content area features a "Documentation" header, a search bar with a "GO!" button, and a language selector for "English | Español". Below this is an "Escalation / Contacts" section. The "Engineering Package" section includes the following content:

- Verifying MTA Config Files - New!**  
Procedures for verifying configuration files for MTAs in production.
- CVOSS Physical Architecture, Version 1.5 - Updated as of 9-10-02. Read before accessing CVOSS procedural documents.**  
Reference information on the physical configuration of the network.

At the bottom left, there is a "Themes" dropdown menu set to "classic". The browser's status bar at the bottom right shows "Internet".

Comprehensive documentation and an online help system (FAQs)

Slide 5 of 6

# Net2Phone CVOSS Portal Screen Shots

CVOSS Portal - Microsoft Internet Explorer

**CVOSS**  
Powered By net2phone

Copyright © 2002 Net2phone, Inc. All Rights Reserved.  
**Primary Server**

Welcome, mwandzilak! - [Sign Out](#)

[\[return to subscriber list\]](#)

**Address Information** [Update](#)

**Service Address**

Name: #00000000000000000000  
Address: 00000000000000000000  
00000000000000000000  
00000000000000000000  
Home Phone Number:

**Billing Address**

00000000000000000000  
00000000000000000000  
00000000000000000000

**Account Information** [Suspend](#)

Subscriber Id: 8792530040422207  
Status: A  
HSD Id: 8792530040422207  
Billing Id: 8792530040422207  
Node: FJ005  
Power Supply: 601  
CSG Print Date: mon20  
Invoice Days:

**Recent Invoices**  
[2003-02-03](#)

**Residential Equipment** [add gateway](#)

name	type	status	ip	mac	
[10.119.26.176]	ARRIS TTM202P - 2 line	A	10.119.26.176	00:00:CA:31:43:F3	<a href="#">swap</a>   <a href="#">delete</a>

**Line Information** [add line](#)

number	gateway/port	display name	feature group	product	
	[10.119.26.176]1		extended	Everyday Calling Plan	<a href="#">edit</a>   <a href="#">delete</a>

**Transaction History** [Refresh](#)

type	status	when	
subscriber/U	C	Feb 27, 2003 3:24 PM	<a href="#">view details</a>
subscriber/I	C	Feb 21, 2003 12:12 AM	<a href="#">view details</a>

## Subscriber and transaction management