

Maximize Value

Net2Phone's Max PVN 2.0 Provides Businesses with Additional Calling Options and Enhanced Reporting Functionality

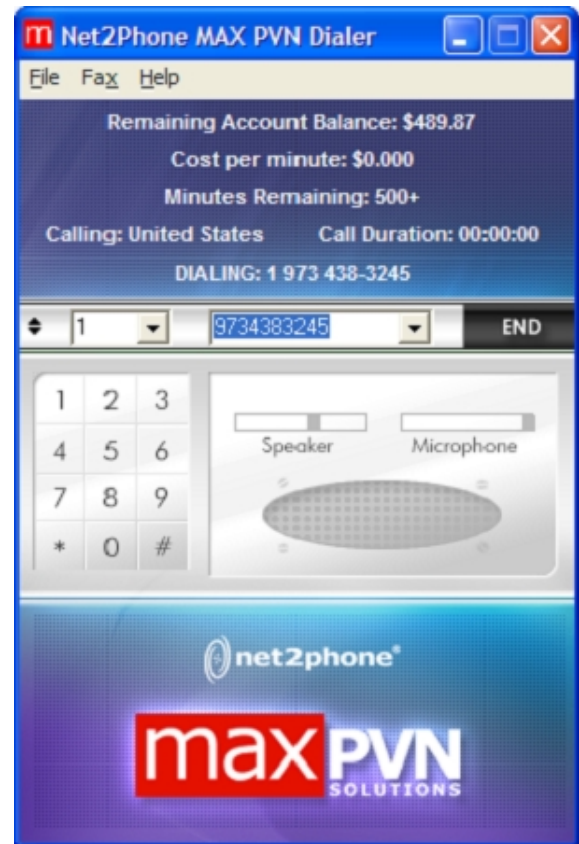
Companies all over the world are experiencing low-cost VoIP calling through the Max PVN. With the introduction of the Max PVN 2.0, Net2Phone is providing even more benefits to corporate customers around the globe.

PC Client Now Available

The Max PVN Dialer allows those on the PVN network to place and receive calls from their PC, increasing the calling options available to those in a home/office environment or traveling employees. Callers can also utilize standard or PBX phones connected to Net2Phone-enabled Max gateways or the Max IP10 single-user IP phone to make PVN calls.

Enhanced Reporting Functionality

The Max PVN 2.0 also enables managers to export call detail records (CDRs) to Excel with one simple click. With this functionality, network and financial administrators can easily manage and analyze call history data.



MAX PVN - Microsoft Internet Explorer

Address: http://66.33.140.35:8888/pvn.jsp

User: admin

Logout

Home Account Device Statistics System

Call History

Search Criteria

Local Account	N2P Account	Start Time	End Time	Calling IP	Called IP	Destination
		07/20/2004	07/20/2004			

Sort by Time Descending Search

Search Results

Time	Local Account	N2P Account	Calling IP	Called IP	Destination	Duration	Stat
2004-07-20 10:10:20			0.0.0.0	0.0.0.0		00:00:00	0
2004-07-20 10:10:19			0.0.0.0	0.0.0.0		00:00:00	0
2004-07-20 10:10:02	4001	0606949612	216.53.122.45	216.53.123.131	**724040	00:00:03	202
2004-07-20 09:56:54	3001		216.53.118.54	216.53.118.44	**23013	00:00:20	0
2004-07-20 09:56:18	3001		216.53.118.54	216.53.118.44	**23013	00:00:32	0
2004-07-20 09:46:20			0.0.0.0	0.0.0.0		00:00:00	0
2004-07-20 09:46:18			0.0.0.0	0.0.0.0		00:00:00	0
2004-07-20 09:46:01	4001	0606949612	216.53.122.45	66.33.140.40	**724040	00:00:03	202
2004-07-20 09:44:26			0.0.0.0	0.0.0.0		00:00:00	0
2004-07-20 09:44:08	4001	0606949612	216.53.122.45	66.33.140.40	**724040	00:00:07	0
2004-07-20 09:27:26	3005	9494705270	216.53.122.44	216.53.3.95	14640	00:00:05	3
2004-07-20 09:22:18			0.0.0.0	0.0.0.0		00:00:00	0
2004-07-20 09:22:15			0.0.0.0	0.0.0.0		00:00:00	0
2004-07-20 09:22:01	3005	9494705270	216.53.122.44	66.33.140.40	**724040	00:00:03	202
2004-07-20 09:20:56			0.0.0.0	0.0.0.0		00:00:00	0
2004-07-20 09:20:53			0.0.0.0	0.0.0.0		00:00:00	0
2004-07-20 09:20:39	3005	9494705270	216.53.122.44	66.33.140.40	**724040	00:00:03	202
2004-07-20 09:20:26			0.0.0.0	0.0.0.0		00:00:00	0
2004-07-20 09:20:25			0.0.0.0	0.0.0.0		00:00:00	0
2004-07-20 09:20:25	3005	9494705270	216.53.122.44	66.33.140.40	**724040	00:00:02	0
2004-07-20 09:20:07	4001	0606949612	66.33.140.139	66.33.140.40	**724040	00:00:02	0
2004-07-20 09:18:50	3005	9494705270	216.53.122.44	216.53.3.95	17320171442	00:00:21	0
2004-07-20 09:17:44	3005	9494705270	216.53.122.44	216.53.3.95	14102279144	00:00:59	0
2004-07-20 09:10:20	3005	9494705270	216.53.122.44	216.53.20.3	14188973153	00:00:00	0

Prev Next **CDR to Excel**

Upgrade Today

Upgrade now and start enjoying the added benefits offered by the Max PVN 2.0. For more information and pricing details, please contact your Net2Phone reseller.

